

Low Profile Design

MRI Package Systems combine proven flow control, clarification, and sludge handling into a single tank that is built to fit into a 15' tall building. Variable speed flocculators accelerate particle collision, Inclined Plate Settlers maximize settling, and a floor-hugging, Hoseless Cable-Vac™ Sludge Collector clears settled particles end-to-end.

MRI Package Systems

Space-Saving Water & Wastewater Treatment

Proven Systems Provide Maximum Flow in Minimum Space

Backed by more than 40 years of design and manufacturing experience, MRI's Water Treatment Package Systems combine the reliable, all-stainless steel components proven through years of use in large municipal treatment systems. MRI Water Treatment Package Systems are custom-built to meet specific site requirements and provide high quality

effluent for a range of flows. Pre-assembled design makes installation quick and easy, significantly reducing the time and cost typically required for plant construction.

MRI systems are ideal for use anywhere construction space and costs are constrained.

Quick Glance Size Chart

Flow Rate	250,000 GPD	500,000 GPD	750,000 GPD	1 Million GPD
Dimensions	24'L x 8'W x 9'H	31'L x 10'W x 9'H	42'L x 10'W x 9'H	48'L x 11'W x 10'H

Performance Advantages

Performance advantages include:

- Complete, head-to-tail solution utilizes corrosion-resistant, factory-tested tanks and components manufactured by MRI
- Increased settling area and water flow in a significantly smaller footprint due to MRI's Inclined Plate Settlers
- Custom-build meets site specifications cost-effectively
- Modular design enables easy and cost-effective installation
- Systems flows range from less than 150,000 GPD to 1 MGD, resulting in the perfect solution for:
 - Conventional pretreatment
 - Membrane pretreatment
 - Backwash reclaim
 - Reject recovery



1



2



3

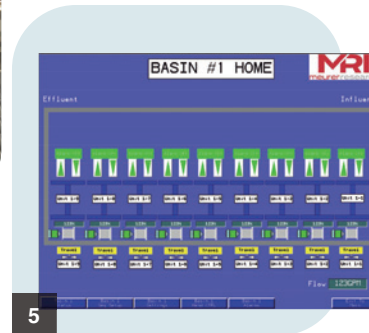


4

Key Features

MRI Water Treatment Package Systems include:

- Stainless-steel tanks
- Multi-stage flocculation
- MRI inlet diffuser
- MRI Inclined Plate Settlers
- MRI Hoseless Cable-Vac™ Sludge Collector
- Walkway
- Controls



5



Components include: 1) Inlet diffuser, 2) Hoseless Sludge Collector, 3) Paddle flocculator, 4) Inclined Plate Settlers, 5) Touch screen control system



Denver
(303) 279-8373

mrisales@parkson.com
www.meurerresearch.com



MRI-PS